



INTERREG ITALY-CROATIA  
PROGRAMME 2021 – 2027

# AWASTER – Adopting WASTE as Resource

## D.1.1.2 Regional waste management report – Dubrovnik-Neretva County

Version: Final

Distribution: Confidential

Date: 8/2024

## Italy – Croatia



INTERREG ITALY-CROATIA PROGRAMME 2021 – 2027

Standard Call for Proposals

Programme priority: Green and resilient shared environment

Specific objective: 2.2: Enhancing protection and preservation of nature, biodiversity and green infrastructure, including in urban areas, and reducing all forms of pollution

Project: AWASTER – Adopting WASTE as Resource

<b>Work Package:</b>	WP1 – Circular economy – current state analysis
<b>Activity:</b>	A.1.1 – Regional background analysis
<b>WP coordinator:</b>	LP – IRENA – Istrian Regional Energy Agency Ltd.
<b>Deliverable:</b>	D.1.1.2 Regional waste management report

<b>Version:</b>	Final	<b>Date:</b>	8/2024
<b>Type:</b>	Report/Study/Tool etc.		
<b>Availability:</b>	Confidential		
<b>Responsible Partner:</b>	LP – IRENA		

<b>Involved Partner</b>	PP1 – IRENA; PP2 - Association for Nature, Environment and Sustainable Development Sunce; PP4 - LAG Eastern Venice; PP5 - Municipality of Casarano; PP6 - Local Action Group LAG 5
<b>Editors</b>	Bojana Silić Krstulović, Lana Vilović (LAG 5)
<b>Contributors</b>	Marko Galović (Galović savjetovanje j.d.o.o.), Bojana Silić Krstulović, Lana Vilović, Nikolina Mikelić (LAG 5)

DISCLAIMER: Report reflects the project AWASTER views; the IT-HR Programme authorities are not liable for any use that may be made of the information contained therein.

Project website: <https://www.italy-croatia.eu/web/awaster>



## Table of contents

<b>1. Introduction</b> .....	4
<b>2. Dubrovnik-Neretva County</b> .....	5
<b>3. Waste management system</b> .....	8
3.1. Waste management system in the Republic of Croatia.....	8
3.1.1. Waste management policies at the national and regional level.....	8
3.1.2. Origin, composition, categories and type of collected waste at national level ...	10
3.2. Waste management system in the Dubrovnik-Neretva County .....	11
3.2.1. Waste management facilities, devices and collection systems in the Dubrovnik-Neretva County .....	11
3.2.2. Origin, composition, categories and type of collected waste at regional level .....	15
3.2.3. Illegal waste disposal sites or illegal landfills .....	16
<b>4. Measures and initiatives for the development and improvement of the waste management system at regional level</b> .....	19
<b>5. Conclusion</b> .....	22
<b>Bibliography</b> .....	23
<b>List of figures</b> .....	23



## 1. Introduction

The purpose of Regional waste management report is analysing and addressing environmental issues in the context of waste production and waste management in Dubrovnik-Neretva County. The impact of increased waste, particularly plastic waste, has significant negative ecological and socioeconomic implications. Report aims to provide a comprehensive analysis of the current state of municipal waste management in Dubrovnik-Neretva County, focusing on the trends in waste generation as a base for minimizing waste generation. By achieving these objectives, Report will provide insights and recommendations that will help reduce the environmental impact of waste production, support sustainable development, and improve the quality of life for Dubrovnik-Neretva County and beyond.

Main topics covered in the Report are detailed socio-economic, topography and demographic description of Dubrovnik-Neretva County, waste management system in the Republic of Croatia, analysis of the composition, categories and type of collected waste at national and regional level, description of the existing waste management infrastructure, including facilities, devices, and collection systems in Dubrovnik-Neretva County, detailed analysis of the types and sources of collected waste collected within the region, illegal waste disposal sites or illegal landfills, and policies, technologies, and practices for improving waste management system in Dubrovnik-Neretva County.

Historically, the increase in waste production can be attributed to factors such as population growth, urbanization, and changes in consumption patterns. Despite efforts to enhance waste management infrastructure and policies, challenges persist. Prompted by the need to address these challenges, this report aims to provide a comprehensive analysis of municipal waste management in Dubrovnik-Neretva County. It seeks to offer data-driven insights and actionable recommendations that will aid in mitigating negative ecological impacts, reducing pollution and associated health risks, and reducing waste generation.



## 2. Dubrovnik-Neretva County

### Socioeconomic description

Dubrovnik-Neretva County, located in the southernmost part of Croatia, is renowned for its picturesque coastline along the Adriatic Sea and the historical city of Dubrovnik. This region includes the fertile Neretva River delta, numerous islands such as Korčula, Mljet, and the Elaphiti Islands, and the Pelješac Peninsula. The county covers an area of 1,782 square kilometers, featuring a diverse landscape that includes the Adriatic coastline, the Neretva River delta, and numerous islands.

The economy of Dubrovnik-Neretva County is primarily driven by tourism, agriculture, and maritime activities.

**Tourism** is the cornerstone of the county's economy, significantly boosted by Dubrovnik, an UNESCO World Heritage site. The city attracts millions of tourists annually, contributing to a vibrant hospitality sector. Other tourist attractions include the scenic islands, pristine beaches, and historical sites, promoting a strong service industry with numerous hotels, restaurants, and recreational facilities.

The Neretva River delta is a vital **agricultural** area known for its production of citrus fruits, particularly mandarins, olives, and vegetables. Viticulture is also prominent, with the Pelješac Peninsula being famous for its high-quality wines, especially the Plavac Mali grape variety.

The county's extensive coastline and numerous islands facilitate a thriving maritime industry, including fishing, shipbuilding, and maritime transport. Dubrovnik Port and several smaller ports support both commercial and passenger maritime traffic, contributing to regional trade and connectivity.

Regarding the **transportation and connectivity** Dubrovnik-Neretva County is connected by road, sea, and air. The Dubrovnik Airport serves international and domestic flights. The Adriatic Highway (D8) runs along the coast, while the Pelješac Bridge, completed in 2022, connects the Pelješac peninsula with the mainland, improving accessibility. The Port of Dubrovnik accommodates numerous cruise ships, enhancing tourism, often bringing negative environmental impacts. The Port of Ploče is a critical hub for cargo traffic, linking Bosnia and Herzegovina with the Adriatic Sea.

In conclusion, Dubrovnik-Neretva County is a region with a dynamic economy primarily driven by tourism, complemented by agriculture, fisheries, and trade. Its rich cultural heritage and natural



## Italy – Croatia



beauty make it a prominent destination, while ongoing infrastructure developments and sustainable practices are crucial for its future growth and stability.

### Demographic indicators

The population density of the County is relatively low, compared to more urbanized areas of Croatia, with significant variation between densely populated urban centers like Dubrovnik and sparsely populated rural areas.

The county has a population of approximately 115.564 residents. The population density is relatively low, with significant variations between urban centers like Dubrovnik and rural or island areas. Dubrovnik with 41.562 inhabitants is the largest city and administrative center, is a key driver of the county's demographic trends. Metković is second largest City in the county and it is also entirely located in the inland without direct connection with sea.

City	Population
Dubrovnik	41.562
Metković	15.235
Korčula	5.415
Ploče	8.220
Opuzen	2.838
<b>Municipalities</b>	
Župa dubrovačka	8.705
Konavle	8.607
Vela Luka	3.772
Orebić	3.705
Blato	3.330

Largest municipalities are Župa dubrovačka (8.705 inh.) and Konavle (8.607 inh.), while smallest municipalities are Zažablje with 553 inhabitants and Janjina with 522 inhabitants.

Importance of tourism is also visible from touristic statistics which reveal that total of 2.06 million tourists visited the County and produced 8.38 million overnight stays. When calculating the waste management indicators, we account those as additional 22.958 inhabitants/equivalent daily. However, this number can also be divided by monthly visits where pressure is put in summer season





## Italy – Croatia

---



months with peak months like July with 1 844 082 overnight stays which account for 59.486,51 additional inhabitants/equivalent daily.



### 3. Waste management system

This chapter provides a comprehensive description of the waste management system in the Republic of Croatia and Dubrovnik-Neretva County.

#### 3.1. Waste management system in the Republic of Croatia

The last published report on waste management in Republic of Croatia is the one prepared for the year 2022, published in July 2023 and revised in September 2023, by the Croatian Ministry of Economy and Sustainable Development. When we are talking about the waste management in general, we analyse the municipal waste management streams and partially specific waste types that are similar to municipal waste (excluding the waste from various types of production, agriculture, forestry, wastewater treatment, vehicles and construction and demolition waste). Methodologically, all the municipal waste providers and other operators report quantities through the electronic system called ROO (register for waste polluters).

##### 3.1.1. Waste management policies at the national and regional level

Croatian legislation is aligned with the EU directives. The Waste Management Act (NN 84/2021) prescribes measures to achieve the goals of the European Green Deal, particularly a 65% recycling rate for municipal waste and a reduction of waste disposal to 10% of the total amount of waste generated by 2035.

According to the Waste Management Act (2021), waste is any substance or object that the holder discards, intends to discard, or is required to discard. Waste management, therefore, is the process of conducting and directing activities to achieve set goals and relates to activities such as the collection, transportation, recovery including sorting, and disposal of waste, the supervision of these activities, as well as the monitoring and measures implemented at locations where waste has been disposed of (Republic of Croatia, 2021).

As the overarching planning document that aligned the waste management system in Croatia with new goals and policies, the Waste Management Plan of the Republic of Croatia for the period 2023-2028 has been developed, based on the goals set for 2035.

In addition to the National Plan, other planning documents for waste management include the Waste Management Plan of regional self-government units and the Waste Management Plan of the City of



## Italy – Croatia



Zagreb, which are proposed by the executive body and adopted by the representative body of the regional self-government unit or the City of Zagreb.

The goals of national waste management plan summarized all the obligations and goals set in primary and secondary national legislation and following table presents major waste stream goals:

Br.	Waste type	Objective
1.	Municipal waste	<p>Recover through recycling and preparation for reuse at least:</p> <ul style="list-style-type: none"> <li>● 55% of the mass of municipal waste by 2025,</li> <li>● 60% of the mass of municipal waste by 2030, and</li> <li>● 65% of the mass of municipal waste by 2035.</li> </ul> <p>To landfill less than 264.661 tonnes of biodegradable waste; To landfill less than 10% of total waste mass produced by 2035; Increase the collection and treatment of biowaste.</p>
2.	Packaging waste	<p>Separately collect and recover, materially or energetically, at least 60% of the total mass waste packaging produced in the territory of the Republic of Croatia.</p> <p>Recycle at least 70% of the mass of total waste packaging by December 31, 2030, at least the following mass of material in the recycling process:</p> <ul style="list-style-type: none"> <li>● 55% plastic</li> <li>● 30% wood</li> <li>● 80% of unpainted metals</li> <li>● 60% aluminium</li> <li>● 75% glass</li> <li>● 85% paper and cardboard</li> </ul>

Besides the Waste law, the waste acquis in Croatia consists of 19 secondary bylaws and 8 ministerial decisions.

Article 111 of the Waste Management Act prescribes the obligations of regional self-government units regarding the development, adoption, and evaluation of the Waste Management Plan of the regional self-government unit. The content of the regional Plan is specified in Appendix VI of the Waste Management Act. Unfortunately, the Dubrovnik-Neretva County did not prepare the regional waste



## Italy – Croatia



management plan, however the public procurement for development of the plan has been started in April of 2024.

### 3.1.2. Origin, composition, categories and type of collected waste at national level

Since 2011, the amounts of municipal waste generated have been continuously increasing, ranging between 1.6 million and 1.8 million tons. In 2020, because of the COVID-19 pandemic, which led to a significant reduction in the service sector (closure of hospitality establishments, a decrease in the number of tourist overnight stays), the amounts of municipal waste fell to the levels of 2014. With the increase in service sector activities (hospitality establishments, a significant increase in the number of tourist overnight stays, etc.) from 2021, the amount of municipal waste rose again, and in 2022, the total amount of municipal waste reached 1,844,382 tons, which is the highest value in the observed period from 1995 to 2022. (Ministry of Economy and Sustainable Development, 2023)

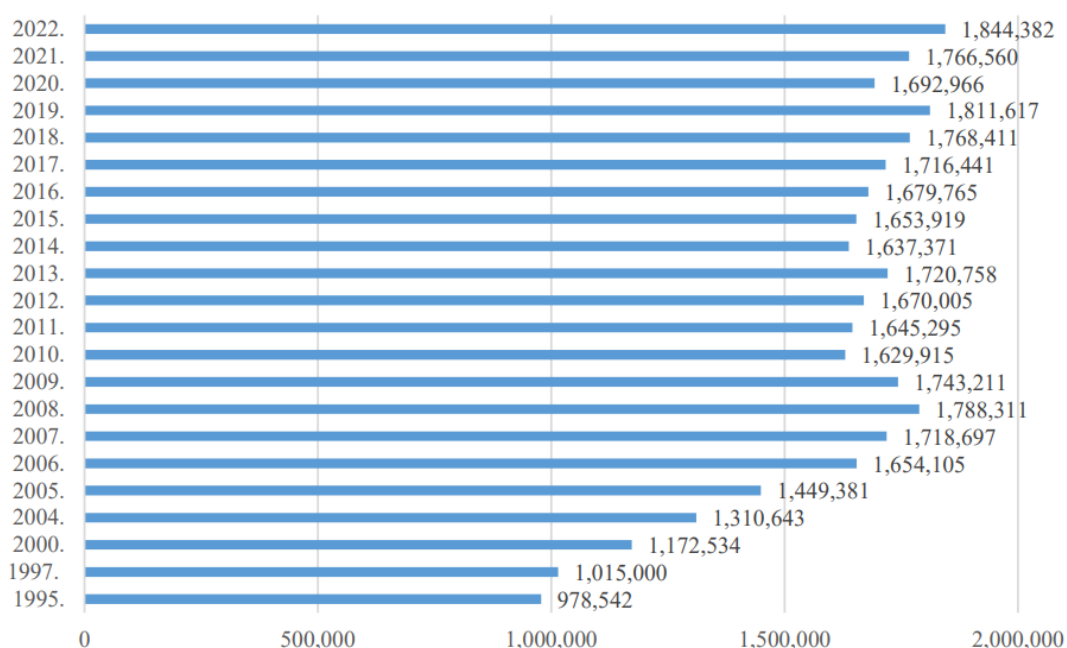


Figure 1. overall waste production in Croatia (year/tonne)

When observing the annual amount of municipal waste generated per capita, it amounted to 474 kg, which is the highest value in the observed period from 1995 to 2022. This can be attributed to the use of the 2021 census, which resulted in significantly lower values compared to the Eurostat population estimates used in previous years.



### 3.2. Waste management system in the Dubrovnik-Neretva County

Unfortunately, no official regional document has been prepared recently in order to summarize the data for the County, and we will use other national sources to summarize the description of current state of play in the waste management sector in the region. The regional waste management plan is in preparation, and it is currently undergoing the procedure of preparing the Strategic Environmental Impact Assessment. The plan aims to cover the period between 2024 and 2029.

#### 3.2.1. Waste management facilities, devices and collection systems in the Dubrovnik-Neretva County

According to the national waste management plan, in the Dubrovnik-Neretva County region 6 landfills still operated in 2022 with estimated remaining landfilling capacities of 95.645 t of waste. Following table presents last 19 landfills and status of sanitation and closure prediction:

Landfill name	Operator	Operation status	Date of closure / if available	Status of sanitation	Waste landfilled in 2022 / tonnes	Remaining capacities
Dubravica	Čistoća Metković d.o.o.	Active		Finalized	6.094,46	11.739
Dubravica 2	Općina Mljet	Closed		Finalized	0	0
Grabovica	Čistoća d.o.o. Dubrovnik	Active		Ongoing	28.155,695	39.604
Kokojevica	KTD MINDEL d.o.o.	Active		Ongoing	4.996,07	51.159
Lovornik	Komunalno održavanje d.o.o.	Active		Ongoing	6.568,204	22.377
Ljubalj	Općina Pojezerje	Closed ex-situ		Finalized	0	0
Mokošica 1	Grad Dubrovnik	Closed ex-situ		Finalized	0	0
Mokošica 2	Grad Dubrovnik	Closed ex-situ		Finalized	0	0
Osičine	Općina Orebić	Closed ex-situ		Finalized	0	0
Podvlaštice	Općina Orebić	Closed		In preparation	0	0
Prapatno	Općina Ston	Closed ex-situ	31.12.2007	Finalized	0	0
Put za Osoj	Grad Dubrovnik	Closed ex-situ		Finalized	0	0



Italy – Croatia

**AWASTER**

Sitnica	Komunalne djelatnosti d.o.o. Vela Luka	Active		Finalized	2595	8.926
Smrijek	Dubrovačko primorje d.o.o.	Closed ex-situ	31.12.2008	Finalized	0	0
Sozanj	Komunalac d.o.o. Lastovo	Active		Finalized	340	1.444
Sutvara	Općina Župa dubrovačka	Closed		Finalized	0	0
Ugrinovica	Krublić d.o.o.	Closed	31.05.2019	In preparation	0	0
Vardište	Općina Janjina	Closed ex-situ		Finalized	0	0
Vinošte	Komunalno d.o.o. Trpanj	Closed ex-situ	23.12.2019	Finalized	0	0

The largest operating landfill in Dubrovnik-Neretva County is Landfill Grabovica located near the City of Dubrovnik and currently accepts waste from the City of Dubrovnik and Municipalities of Župa Dubrovačka, Dubrovačko Primorje and Konavle, where in 2022 28.155,695 tonnes of waste were landfilled. In July 2019 the landfill sanitation has begun with phase 1 and the completion of works is expected in 2025. Just like majority of landfills on Karst surface, direct impact on soil, water and air were associated.



Figure 2. Grabovica landfill (source: City of Dubrovnik)



The future of WM facilities in Dubrovnik-Neretva County predominantly depends on the development of the waste management centre Lučino Razdolje which will replace all the existing landfills and introduce mechanical-biological treatment (MBT) for the mixed residual waste. The MBT plant is expected to processing approx. 40,000 t/year of waste, while Construction waste processing plant is planned for processing approx. 7,520 t/year of construction waste.

The new centre has planned municipal waste disposal site for 578,000 m<sup>3</sup> of processed waste during the expected lifetime (25 years). The project also envisage the storage for small amounts of separately collected waste which will be collected and temporarily stored in the area.

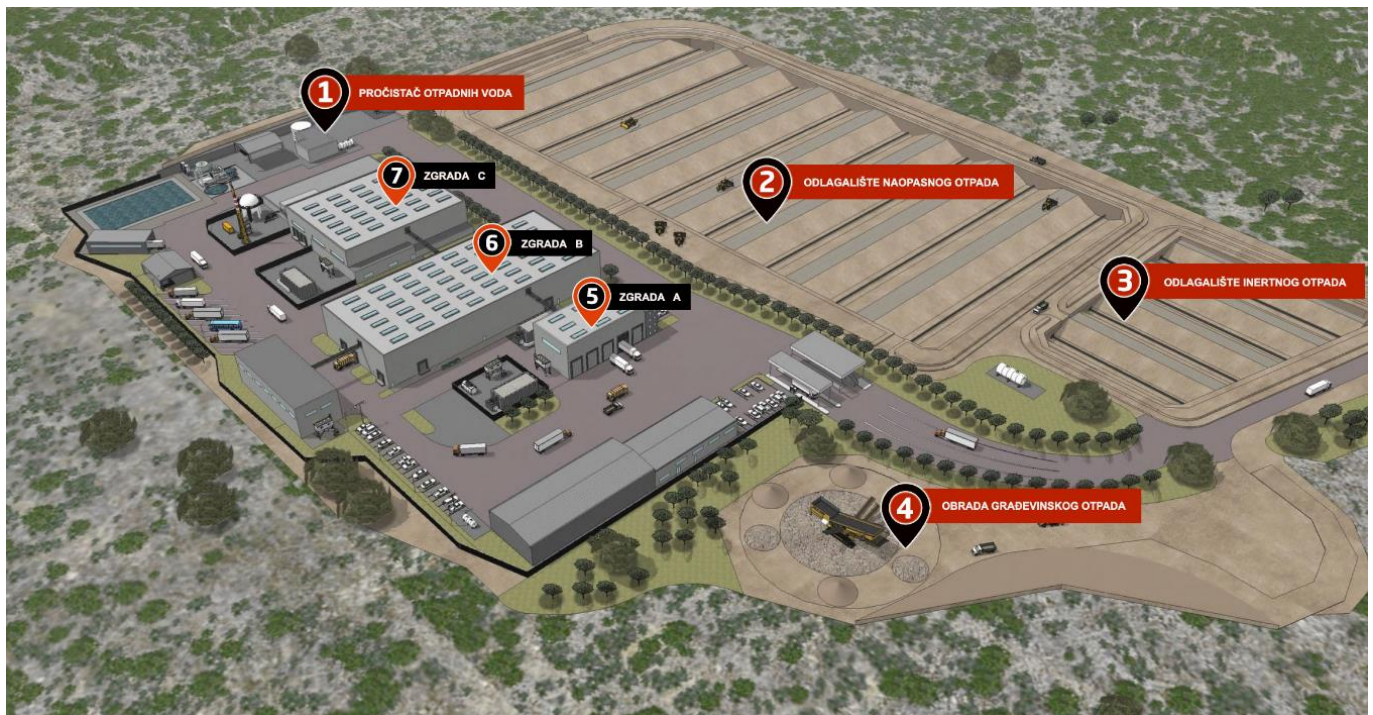


Figure 3. scheme of the Lučino Razdolje Waste management centre (source: <https://ago-dnz.hr/o-projektu>)

Like many waste management projects, Lučino Razdolje has faced opposition from some local residents concerned about potential environmental and health impacts, since different research show connection with potable water sources for the region. Despite advanced lining and leachate collection systems, there is always a risk of leachate leaking into the groundwater. This can lead to contamination of local water sources, affecting both human health and ecosystems.

## Italy – Croatia

---



According to national waste management plan, the County currently has 2.900 tonnes per year capacity installed for separately collected waste while total needed capacity is around 29.775 tonnes per year. Investment needed to satisfy the capacities are approximately 12,48 M EUR, and it should sort additional 24.076 tonnes of separately collected waste.

Regarding biowaste treatment facilities such as composting plants and anaerobic digestion plants, the County currently has 1 plant in operation with 5.720 tonnes capacity in the city of Metković. Additional 11.759 tonnes capacities shall be constructed with total investment predicted to be set at 7.80 M EUR. The composting facility in Metković has been financed by EU with 1.6 M EUR (50%), and it has been opened in late 2023, and in full operation since April 2024 which means it is the first significant composting project in Dalmatian region.

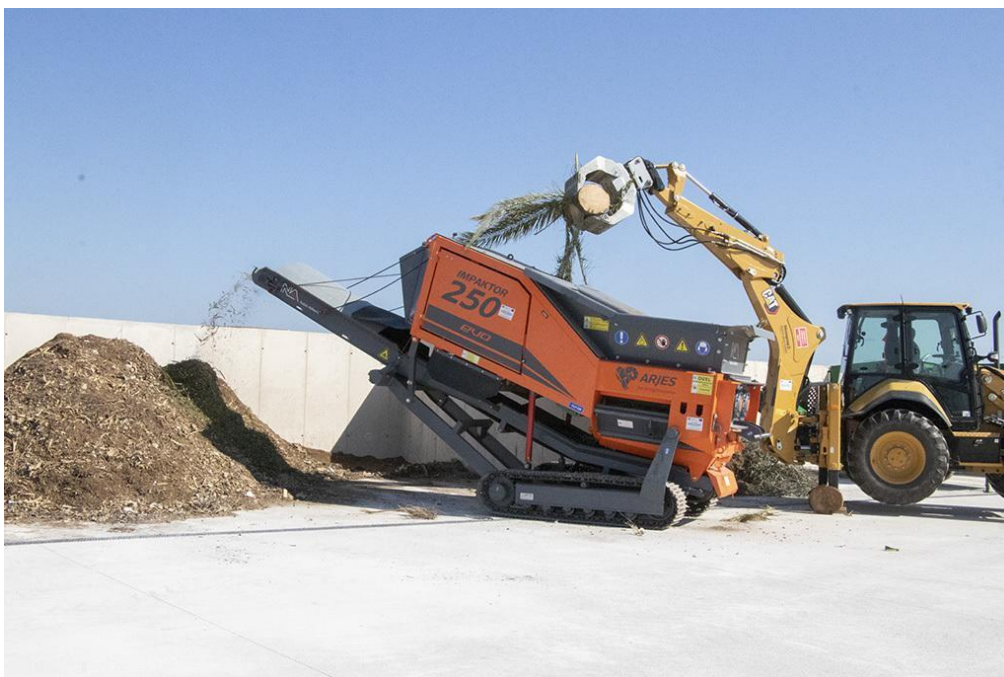


Figure 4. shredding operation on Metković composting facility (source: [www.metkovic.hr](http://www.metkovic.hr))

Besides the municipal solid waste, capacities are not needed in the construction and demolition waste sector where 898.090 tonnes of capacities have been installed.

Regarding the post sorting phase, National plan envisages also development of recycling capacities for plastic recycling (9.278 tonnes/year plant), glass recycling (2.333 tonnes/year plant) and paper recycling (12.254 tonnes/year plant).



### 3.2.2. Origin, composition, categories and type of collected waste at regional level

In 2022 the amount of municipal waste collected was 55.283 tonnes, out of which 48.901 t were collected from households, 6.381 tonnes from business sector (mostly mixed waste).

Waste stream	Quantity/tonne	Share
<b>Mixed municipal waste</b>	48.901	93%
<b>Biodegradable waste</b>	85	0%
<b>Wood</b>	0	0%
<b>Metal</b>	138	0%
<b>Textile</b>	7	0%
<b>WEEE</b>	0	0%
<b>Paper</b>	392	1%
<b>Plastics</b>	249	0%
<b>Glass</b>	79	0%
<b>Other</b>	2.638	5%
<b>Total</b>	52.489	100%

Figure 5. quantities of collected MSW in 2022. (source: ROO public database)

From statistical data, it is visible that majority of waste is still landfilled or treated with other recovery option as 93% of collected waste is mixed municipal waste.

Total amount of waste generated as part of public service in DN County is 52.489 t of waste, out of which 48.901 t have been landfilled, which leaves the capacities for further landfilling for less than 3 years of operation. The total amount of separately collected waste through collection service was 3588 tonnes which is pitifully low. Since none of the cities or municipalities have reached the recycling targets set by legislation (50% by 2020), all of them have to pay the national fee for landfilling for total of 20.759 tonnes resulting in damages in taxes worth approximately 551.038,55 EUR.

Outside of municipal waste streams (public service stream) additional t was collected by the economic operators, where 3.186,52 were recovered or recycled.

Companies outside of public service-related waste streams are:

Number.	Operator	Quantities/tonne
1.	RESPEKT d.o.o.	792,52



## Italy – Croatia



2.	Signalizacija Dubrovnik d.o.o.	376,00
3.	Strabag d.o.o.	2000

Figure 6. waste producer/collector in Dubrovnik Neretva County

These small quantities definitely leave DN county at the very bottom of national statistics per region, and major efforts will be needed in order to reach European and national targets.

Waste composition analyses in DN County has not been conducted in last few years, so in order to further analyse the effectiveness of the waste management system, we will enclose the analyses presented in Elaborate for Environmental Protection for Waste Management Centre in Dubrovnik Neretva County on the location Lučino Razdolje. (IPZ Uniprojekt, 2014)

Waste type	Share (%)
<b>Kitchen biowaste with Garden biowaste</b>	41,2%
<b>Paper</b>	12,2%
<b>Wood</b>	3,20%
<b>Textiles</b>	4,9%
<b>Bones and leathers</b>	0,1%
<b>Glass</b>	1%
<b>Plastic</b>	19,80%
<b>Metal</b>	2,30%
<b>Rubber and leather</b>	2,1%
<b>Other</b>	13,2%
<b>Total</b>	<b>100</b>

Figure 7. waste composition in Dubrovnik-Neretva County (source: Environment protection Elaborate for Lučino Razdolje)

### 3.2.3. Illegal waste disposal sites or illegal landfills

Croatia has been struggling with the problem of illegal waste disposal sites for decades. Their exact number is impossible to determine, and it is about locations with a few bags of garbage on the one hand and locations of large illegal landfills on the other. From time to time, the competent services or volunteers in their voluntary actions succeed in remediating them by taking waste to official



## Italy – Croatia



landfills, but due to irresponsible behaviour and insufficiently developed environmental awareness of people (whom we will call "Someone" for the purposes of this text), they are created again, in the same or nearby place.

Environmental awareness also strengthens citizens, individuals have the opportunity to report illegal landfills in their surroundings. According to the report of the Green Telephone Association, the largest number of reports from citizens, over 30%, refers to the Waste category. Namely, as early as 1992, the first service for citizens was established, where information could be obtained and problems related to the environment, nature and their protection could be reported - the Green Phone. Additionally, since 1<sup>st</sup> of January 2020, the state has implemented electronic system for evidencing and reporting illegal landfills and fly tipping locations called Records of the locations of discarded waste (Croatian - Evidencija lokacija odbačenog otpada ELOO). The locations are marked with geolocation pins and also contain pictures of waste found on the site.

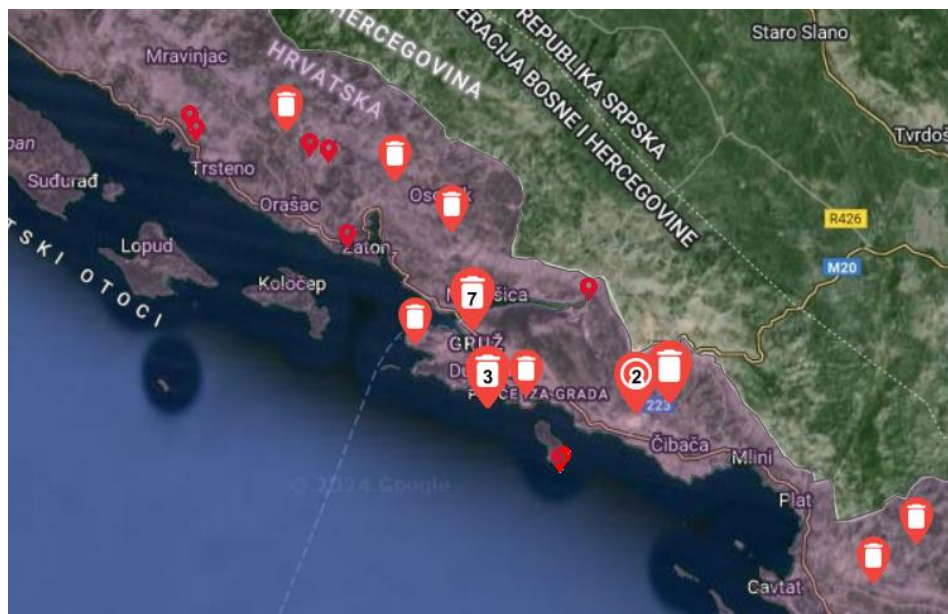


Figure 8. screenshot of waste locations in Dubrovnik-Neretva County (source:eloo.haop.hr)

Since the implementation of the ELOO system, the illegal landfills were reported on 87 occasions on officially recognized 43 spots, and local authorities have resolved 45 cases (51,7%) and permanently closed fly tipping 2 spots.



## Italy – Croatia



**Naziv lokacije:** Ulica od Nuncijate, Dubrovnik

**Opis lokacije:**  
čestica zemlje 200/2 k.o. Gruž

**Naselje:** Dubrovnik

**Grad/Općina:** DUBROVNIK

**Vrsta otpada:**  
Komunalni otpad, glomazni otpad, građevinski otpad

**Ukupna količina otpada:** 200 kg, 5 m<sup>3</sup>

**Procijenjena površina otpada:** 15 m<sup>2</sup>

**Status lokacije otpada:** Otpad na lokaciji

**Datum uklanjanja otpada:** 15.11.2021.

**Koordinate (HTRS96/TM):** (630344.41, 4725976.49)

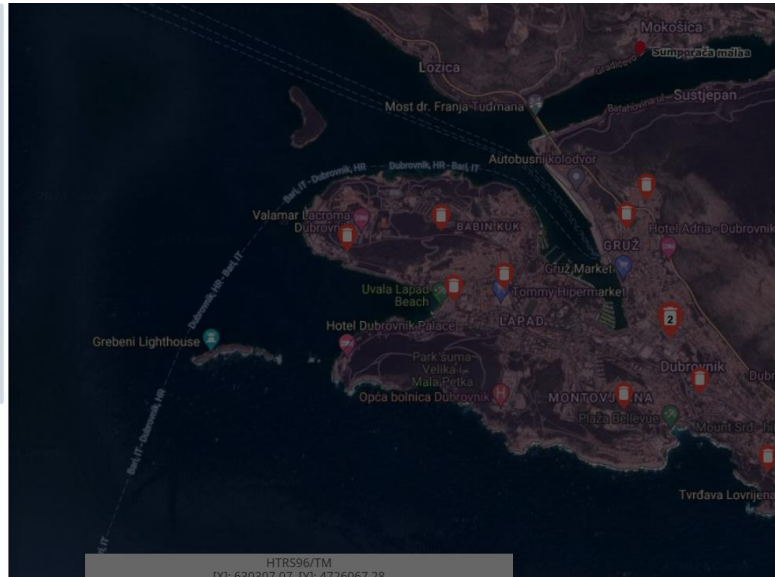


Figure 9. screenshot of publicly available ELOO interface



## 4. Measures and initiatives for the development and improvement of the waste management system at regional level

The problematic measures and initiatives is at this moment rather unknown due to the fact that national waste management plan relieved the local planning obligation and shift it to operational planning on regional level. Since the planning still has only started, we will analyse historically most important initiatives in the municipal solid waste management sector.

Regional project of the waste management centre Lučino Razdolje is currently in the high stage of preparation, however the details of the construction timeline seem to be rather scarce, as even official webpage shows little or no information on current progress.

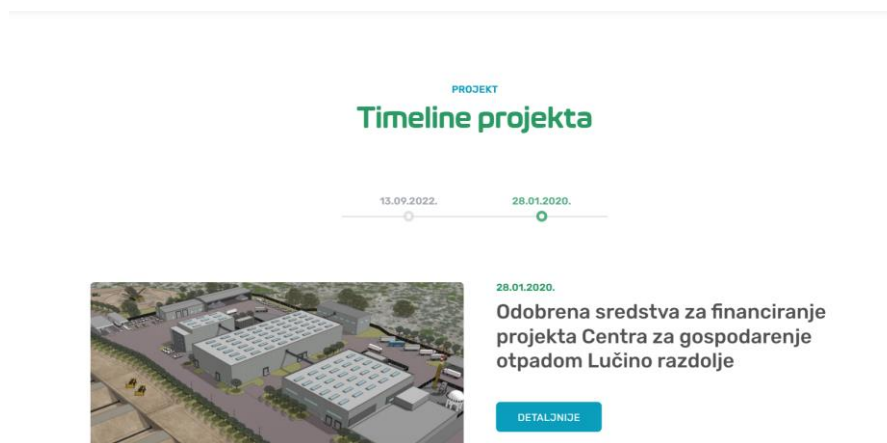


Figure 10. screenshot of project progress webpage - ending at 2020. (source: ago-dnz.hr)

However, this project is only an “end of pipe” solution as serious investments and organizational changes need to happen on higher hierarchy levels, such as waste prevention, waste collection and transportation of waste.

One of the pioneers of separate waste collection based on **door to door** methodology in Dalmatia is the City of Metković, with its municipal company Čistoća Metković d.o.o. that removed street collection system and put in place the system that allows collection from each household already in 2016. Even that change did not go without citizens' protests. The public resistance and unwillingness to give up messy street container system was rather short as it was visible from first days of the project implementation that the new collection system is serving them perfectly. Another important project run by this City is the **composting plant** project which was also pioneering in the region and will hopefully lead towards the first target achieving municipality in Dubrovnik-Neretva County.



## Italy – Croatia



In May 2020, the City of Dubrovnik became the first Croatian coastal city to join the **Plastic free initiative**, implementing project activities that reduced the plastic footprint in various segments of social life and the local community, while promoting alternative solutions for plastic waste. Part of the awareness campaign targeted both foreign and domestic tourists, as tourism is a key contributor to pollution. The city adopted the "Action Plan to Reduce Plastic Pollution in the City of Dubrovnik for the Period 2021-2026." On August 30th, 2021, the Dubrovnik City Council decided to limit the use of single-use plastics for the City of Dubrovnik and its institutions and businesses. Two public events free of single-use plastics were held in 2021. Since its launch, the Dubrovnik Plastic Free Initiative has made significant strides in reducing plastic waste within the city. The visible reduction in plastic litter, improved recycling rates, and increased public awareness are early indicators of success. The project itself was successfully implemented by association Sunce from Split in cooperation with WWF mediterranean office.

Another positive initiative by the Sunce association is the project concerning island of Lastovo and marine litter. Marine litter represents one of the fastest growing global marine environmental problems. Although in Croatia there is a lack of data on the impact of marine debris on seabirds, it is expected that birds will be exposed to this problem and more research is needed on this threat.



Figure 11. Plastic waste analyses on Lastovo Island (source:www.sunce-st.org).

During the monitoring of the amount and composition of solid waste washed up on the coast, it was recorded, sorted and a total of 42,047 different pieces of waste were removed. The total mass of



## Italy – Croatia

---



collected waste was 745.70 kg, where the category Artificial polymer materials accounted for the largest share of mass with 55.54% (414.23 kg), and after it, processed wood with 33.17% (251.43 kg). The remaining 12% are the rest of the marine categories waste. (BIOM, SUNCE, BirdLife and Lastovsko otočje, 2021)

In the 2024. the City of Korčula finished the process of transitioning to a new, individualized way of managing waste that was based mainly on a door-to-door methodology. Common containers on public areas are kept only in those locations where it is not possible to have an individual tank in front of the house, such as in the Old Town. Those parts of the city dispose their mixed waste in common containers using a waste meter.

Last but not the least step towards sound waste management practice is the change of collection methodology in the City of Dubrovnik which is the largest producer of waste in the County. The pilot project for the introduction of pay as you throw system will be introduced in the city parts called Mokošica and Lapad. "Underground containers will be equipped with waste meters. Once people get used to it, we will begin implementing the new waste management system, which we will then expand to the entire area of Dubrovnik. I believe that by the end of the year, we will start with the waste management system," said Mayor Mato Franković." (Metković, N., 2024).

In the new waste management system, it is planned that waste collection will be charged based on the actual amount of waste disposed.



## 5. Conclusion

Dubrovnik-Neretva County faces significant waste management challenges driven by factors such as tourism, population growth, and urbanization. Despite existing efforts and infrastructure, there is a need for further improvements to mitigate the environmental and health impacts of waste. The introduction of innovative systems like "pay as you throw" and the promotion of recycling and waste separation are crucial steps towards sustainable waste management. By implementing these measures and continuing to develop and refine waste management policies, Dubrovnik-Neretva County can reduce its environmental footprint, promote sustainable development, and enhance the quality of life for its residents and visitors. The report underscores the importance of ongoing efforts and the need for a comprehensive approach to waste management that includes both technological solutions and community engagement.

The waste management system in Croatia and specifically in Dubrovnik-Neretva County is detailed, including policies, infrastructure, and types of waste. The report outlines the current state of waste generation, emphasizing the negative ecological and socioeconomic impacts of increased waste production, especially plastic waste. Key data on waste composition and sources are provided, showing that artificial polymer materials constitute a large portion of the waste collected.

The report also discusses the illegal waste disposal sites and the need for improved waste management practices. Various initiatives and measures aimed at enhancing waste management in the region are examined, including a pilot project for a "pay as you throw" system in Dubrovnik. This system aims to charge for waste collection based on the actual amount of waste disposed of, thereby encouraging recycling and waste separation.



## Bibliography

- BIOM, SUNCE, BirdLife and Lastovsko otočje. (2021). *Praćenja otpada iz mora na plažama i na morskoj površini na području Parka*. Split. Retrieved from [https://www.lifeartina.eu/wp-content/uploads/2019/02/ARTINA\\_Monitoring\\_mors\\_otpada\\_sazetak\\_2021.pdf](https://www.lifeartina.eu/wp-content/uploads/2019/02/ARTINA_Monitoring_mors_otpada_sazetak_2021.pdf)
- IPZ Uniprojekt. (2014). Elaborate for Environmental Protection for Waste Management Centre in Lučino Razdolje. Dubrovnik. Retrieved from [https://mingo.gov.hr/UserDocImages/ARHIVA%20DOKUMENATA/ARHIVA%20---%20OPUO/2017/14\\_04\\_2017\\_Elaborat\\_CGO\\_Lucino\\_Razdolje.pdf](https://mingo.gov.hr/UserDocImages/ARHIVA%20DOKUMENATA/ARHIVA%20---%20OPUO/2017/14_04_2017_Elaborat_CGO_Lucino_Razdolje.pdf)
- Metković, N. (2024). *Nova Mokošica bit će pokusno područje za jedan novi sustav*. Dubrovnik press. Retrieved from <https://dubrovnikpress.hr/uvjeti-koristenja/nova-mokosica-bit-ce-pokusno-podrucje-za-jedan-novi-sustav.html>
- Ministry of Economy and Sustainable Development. (2023). *Municipal solid waste report for 2022*. Zagreb: Ministry of Commerce and Sustainable Development.
- Republic of Croatia. (2021). *Waste management ACT - NN 84/2021*. Retrieved 02.07.2024., from [https://narodne-novine.nn.hr/clanci/sluzbeni/2021\\_07\\_84\\_1554.htm](https://narodne-novine.nn.hr/clanci/sluzbeni/2021_07_84_1554.htm)

## List of figures

Figure 1. overall waste production in Croatia (year/tonne)	9
Figure 2. Grabovica landfill (source: City of Dubrovnik)	11
Figure 3. scheme of the Lučino Razdolje Waste management centre (source: <a href="https://ago-dnz.hr/o-projektu">https://ago-dnz.hr/o-projektu</a> )	12
Figure 4. shredding operation on Metković composting facility (source: <a href="http://www.metkovic.hr">www.metkovic.hr</a> )	13
Figure 5. quantities of collected MSW in 2022. (source: ROO public database)	14
Figure 6. waste producer/collector in Dubrovnik Neretva County	14
Figure 7. waste composition in Dubrovnik-Neretva County (source: Environment protection Elaborate for Lučino Razdolje)	15
Figure 8. screenshot of waste locations in Dubrovnik-Neretva County (source: <a href="http://eloo.haop.hr">eloo.haop.hr</a> )	16
Figure 9. screenshot of publicly available ELOO interface	17
Figure 10. screenshot of project progress webpage - ending at 2020. (source: <a href="http://ago-dnz.hr">ago-dnz.hr</a> )	18
Figure 11. Plastic waste analyses on Lastovo Island (source: <a href="http://www.sunce-st.org">www.sunce-st.org</a> ).	19

