

## D.2.2.1 – Hazard maps

**Interreg**



Co-funded by  
the European Union

**Italy – Croatia**

---

 **RESONANCE**

PP1 LP-UNIURB

PP2 CNR

## Document Control Sheet

<b>Project number:</b>	ITHR0200175
<b>Project acronym</b>	RESONANCE
<b>Project Title</b>	impRoving landslidE riSk preventiOn aNd mAnagement iN Coastal arEas
<b>Start of the project</b>	March 2024
<b>Duration</b>	30 months

<b>Project activity</b>	2.3 Landslide risk analysis
<b>Deliverable number &amp; name</b>	D.2.2.1 Hazard maps
<b>Type of deliverable</b>	Report
<b>Language</b>	English
<b>Work Package Number and Title</b>	WP2 - Slope analysis and risk definition
<b>Work Package Leader</b>	PP3-GRADRI

<b>Status</b>	Final
<b>Author(s)</b>	Mirko Francioni, Mariagiulia Annibali Corona, Paolo Stocchi, Stefano Morelli, Simone Galeotti, Giulio Pappafico - <b>LP-UNIURB</b> ; Giovanni Leucci, Lara De Giorgi, Giuseppe Cavuoto, Daniela Tarallo, Michele Punzo, Maurizio Lazzari, Ivan Ferrari, Vincenzo Di Fiore, Francesco Giuri - <b>PP2-CNR</b>
<b>Version</b>	1



## Index

<b>1. Risk Maps</b> .....	4
1.1 Conero Regional Park (IT).....	4
1.2 Roca (IT).....	5
1.3 HAVISCE (HR).....	5
1.4 BROVINJE (HR).....	6



## 1. Hazard Maps

The stability analyses and numerical simulations were used to develop hazard and risk maps and updated the WebGis database.

Below the hazard maps developed for the 4 pilot case studies.

### 1.1 CONERO REGIONAL PARK (IT)



Figure 1. Landslide hazard map of Conero Park



## 1.2 ROCA (IT)



Figure 2. Landslide hazard map of Roca area

## 1.3 HAVISCE (HR)



Figure 3. Landslide hazard map of Havisce area



## 1.4 BROVINJE (HR)

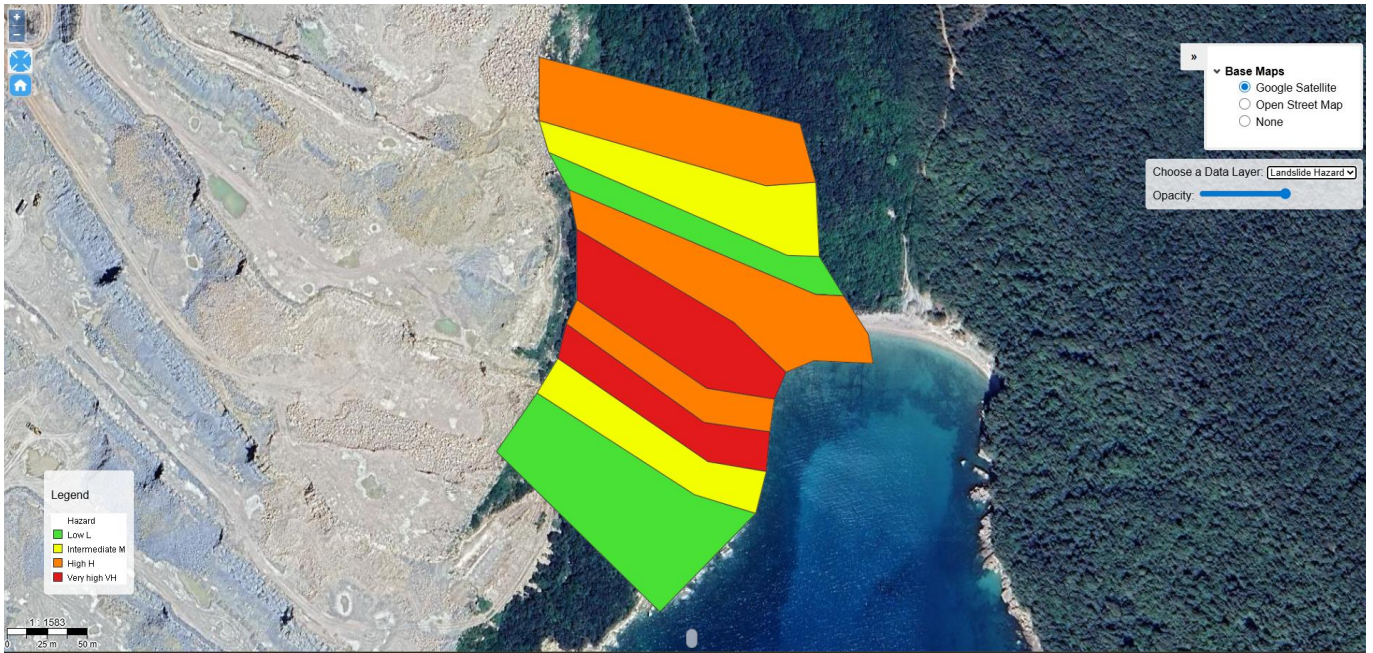


Figure 4. Landslide hazard map of Brovinje area

