

**Interreg**



Co-funded by  
the European Union

Italy – Croatia

 **CRESCO Adria**

# Planning Resilient Adriatic Coastal Areas

CRESCO Adria supports climate-resilient  
spatial planning across Croatia and Italy



Science, planning and cooperation  
for climate adaptation in coastal communities.

# Project Overview

CRESCO Adria supports climate-resilient coastal planning by connecting science, spatial planning, governance, and local participation.

The project responds to growing climate pressures in Adriatic coastal areas, including coastal flooding, sea-level rise, erosion, heatwaves, drought, landslides, and pressure on ecosystems, infrastructure, and tourism.

CRESCO Adria works across Croatia and Italy to improve the knowledge base for adaptation, strengthen cross-border cooperation, and support local authorities in developing practical planning responses.

## Climate pressures in Adriatic coastal areas



Coastal flooding



Sea-level rise



Coastal erosion



Heatwaves



Drought



Landslides



## Main objectives



Strengthen evidence for climate-resilient planning.



Support pilot areas with analyses and adaptation planning.



Build knowledge through training and academic exchange.



Improve cooperation between public authorities, universities, and local communities.

## Pilot areas



### Crikvenica (Croatia)

A coastal urban area focused on flood risk management, shoreline adaptation, and resilient infrastructure and tourism.



### Sali (Croatia)

An island community addressing water scarcity, ecosystem protection, and sustainable land and sea use.



### Nuova Pescara (Italy)

A low-lying coastal area working on flood resilience, dune restoration, and nature-based solutions.

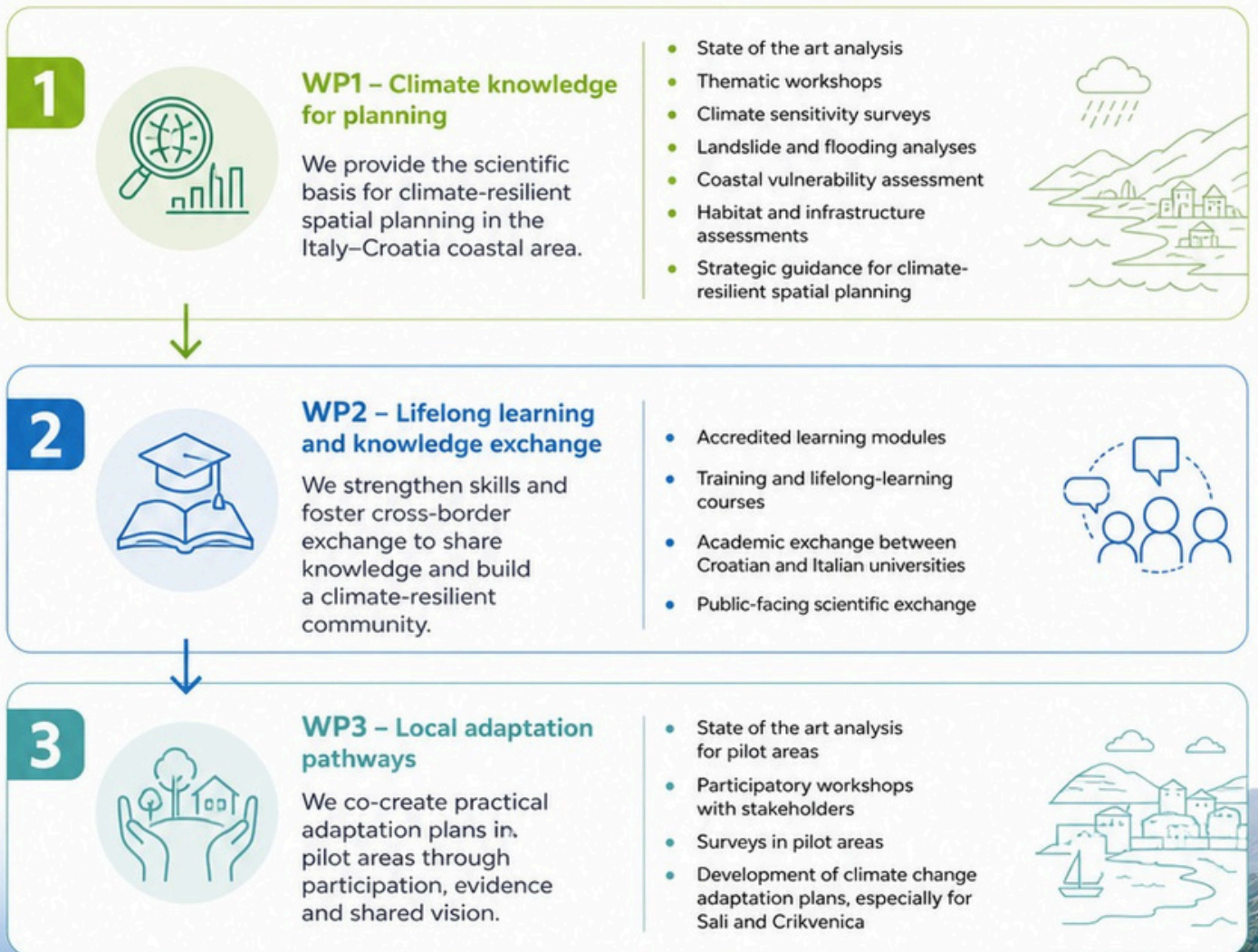


### Pineto (Italy)

A coastal municipality facing erosion and landslide risks, focusing on stable slopes, forest protection, and safe development.

# How CRESCO Adria Works

Three work packages work together to build climate knowledge, strengthen capacities and co-create local adaptation solutions.



## Our process: from knowledge to action



# Pilot Areas

The CRESCO Adria project is tested in four pilot areas that represent different coastal realities across the Adriatic. From islands to urban coasts, these areas help us test and refine adaptation approaches under diverse local conditions.



## Crikvenica (Croatia)

A coastal town where tourism, urban development, the Dubračina River, and coastal exposure make adaptation planning particularly important.



## Sali (Croatia)

An island municipality on Dugi Otok facing water scarcity, sea-level rise, wildfire risk, and strong dependence on seasonal tourism and natural resources.



## Nuova Pescara (Italy)

A dense urban coastal area exposed to flooding, coastal hazards, heat stress, and infrastructure pressure.



## Pineto (Italy)

A coastal municipality with valuable beach, dune, and pine environments facing erosion and climate-related pressures on natural and urban systems.



# Meet the CRESCO Adria Partners

CRESCO Adria brings together universities, public authorities, and local communities from across the Adriatic to combine science, planning, and governance for climate resilience. Together, we design solutions, test them in real places, and build knowledge that empowers our regions to adapt.



**EFRI – Faculty of  
Economics and Business,  
University of Rijeka  
(Lead Partner)**

Overall coordination,  
reporting, communication,  
and lifelong learning  
development.



**IPP PGC – Public  
Institution for Spatial  
Planning of  
Primorje-Gorski Kotar  
County**

Regional spatial planning  
expertise and  
coordination support.



**GRADRI – Faculty of  
Civil Engineering,  
University of Rijeka**

Technical analyses,  
mapping, and climate  
sensitivity assessments.



**City of Crikvenica**

Local pilot area  
implementation and  
stakeholder  
engagement.



**Municipality of Sali**

Island pilot area  
implementation and  
stakeholder  
engagement.



**Regione Abruzzo**

Coordination and  
institutional support for  
the Italian pilot area  
of Pineto.



**UNICAM – University  
of Camerino**

Scientific support, Italian  
pilot area analyses,  
workshops, and academic  
exchange.



# Looking Ahead

CRESCO Adria continues to support climate-resilient spatial planning across the Adriatic through **evidence-based analyses, participatory dialogue, training, and adaptation planning.**

Working together across borders and sectors, we strengthen the capacity of coastal communities to face climate challenges and build a more sustainable future.

## What comes next



Finalisation of strategic guidelines for climate-resilient spatial planning



Further development of training and lifelong-learning activities



Continued cross-border exchange



Preparation of local adaptation plans



Communication of results to stakeholders and the wider public



**Explore project updates, resources, and news on the CRESCO Adria website.**

[www.italy-croatia.eu/web/crescoadria](http://www.italy-croatia.eu/web/crescoadria)



Scan to visit  
the project website

